

# Ceiling hanging bracket

(Vertical hanging / Inclined hanging)

# TY-CE103PS10

## Product summary

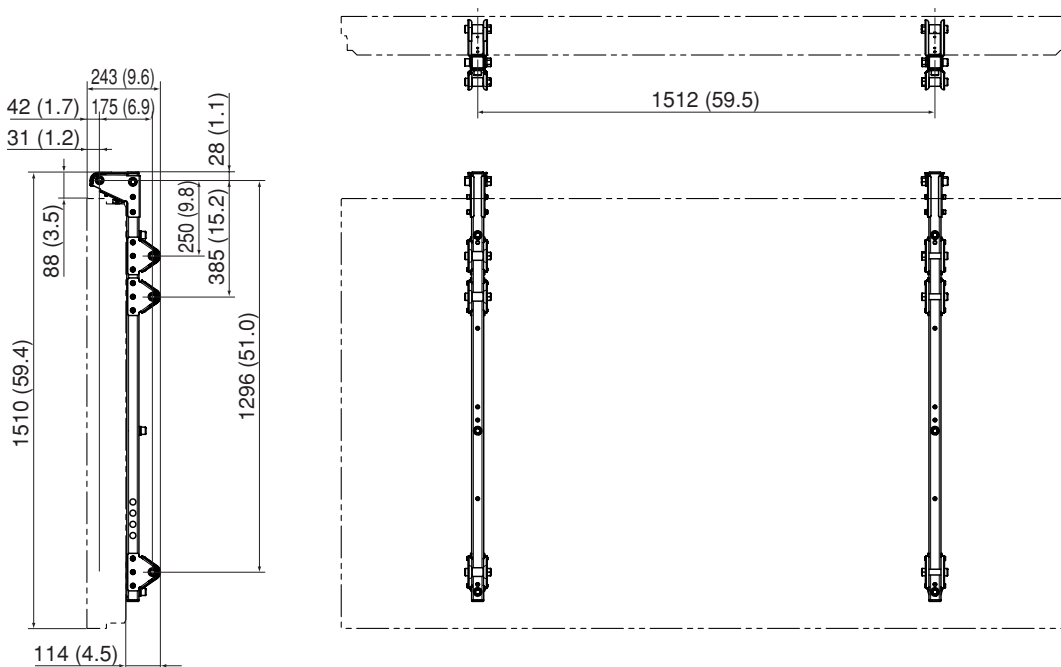
This equipment is a ceiling unit for suspending the Plasma Display from a ceiling structure.  
 This ceiling unit is angle-adjustable in five steps. It is exclusive to the model 103 inch.  
 When installing the ceiling unit, always support its weight with four or more wire ropes etc. and install a swing stop according to the circumstance. Besides, install two other wire ropes so as to prevent the unit from falling down.

## Product specification (Design and specifications subject to change without notice)

|                  |   |
|------------------|---|
| Weight (Mass)    | Vertical hanging 15kg (33.1 lbs.)<br>Inclined hanging 37 kg (81.6 lbs.) |
| Adjusting angles | 0, 5, 10, 15, 20 degrees  |

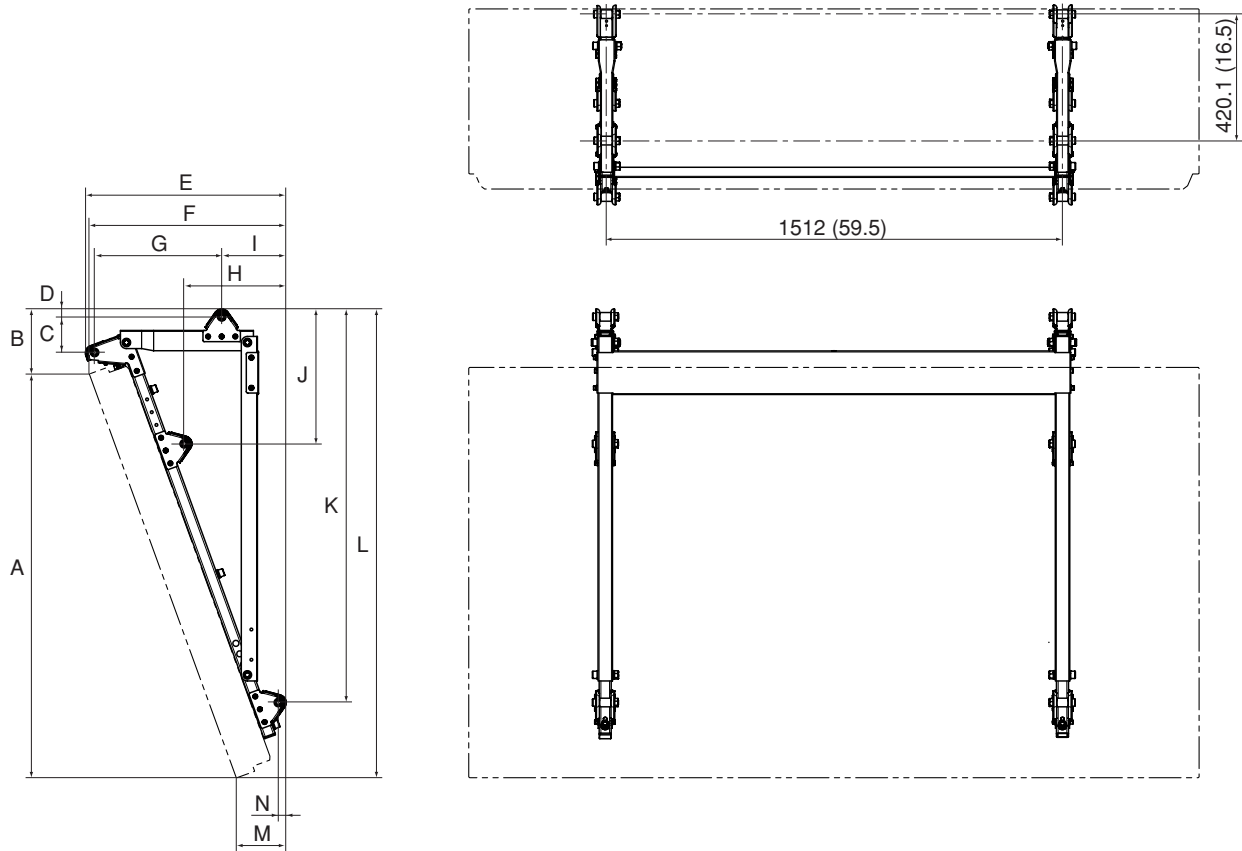
## Dimensions (Vertical hanging)

Cautions : This drawing is not a scale. Unit : mm (inches)



**Dimensions** (Inclined hanging)

Cautions : This drawing is not a scale. Unit : mm (inches)



| R | 5°          | 10°         | 15°         | 20°         |
|---|-------------|-------------|-------------|-------------|
|   | mm (inches) | mm (inches) | mm (inches) | mm (inches) |
| A | 1416 (55.7) | 1400 (55.1) | 1373 (54.1) | 1336 (52.6) |
| B | 180 (7.1)   | 192 (7.6)   | 204 (8.0)   | 215 (8.5)   |
| C | 90 (3.5)    | 100 (3.9)   | 109 (4.3)   | 118 (4.6)   |
| D | 26 (1.0)    | 26 (1.0)    | 26 (1.0)    | 26 (1.0)    |
| E | 584 (23.0)  | 576 (22.7)  | 573 (22.6)  | 665 (26.2)  |
| F | 578 (22.8)  | 576 (22.7)  | 567 (22.3)  | 652 (25.7)  |
| G | 425 (16.7)  | 425 (16.7)  | 423 (16.7)  | 421 (16.6)  |
| H | 340 (13.4)  | 307 (12.1)  | 274 (10.8)  | 338 (13.3)  |
| I | 123 (4.8)   | 122 (4.8)   | 120 (4.7)   | 214 (8.4)   |
| J | 484 (19.1)  | 474 (18.7)  | 462 (18.2)  | 446 (17.6)  |
| K | 1391 (54.8) | 1371 (54.0) | 1341 (52.8) | 1302 (51.3) |
| L | 1596 (62.8) | 1592 (62.7) | 1577 (62.1) | 1551 (61.1) |
| M | 461 (18.1)  | 330 (13.0)  | 200 (7.9)   | 166 (6.5)   |
| N | 261 (10.3)  | 149 (5.9)   | 39 (1.5)    | 26 (1.0)    |